

Updates in Diagnosis and Management of Hyperinsulinism and Neonatal Hypoglycemia

**Thursday, Sept. 5 and
Friday, Sept. 6, 2019**

Leonard and Madlyn Abramson
Pediatric Research Center

**Learn more:
chop.cloud-cme.com**



**Children's Hospital
of Philadelphia®**

Breakthroughs. Every day.™



*Adriana, age 2
Hyperinsulinism patient*

PROGRAM OVERVIEW

This two-day international symposium will present exciting advances in the field of hyperinsulinism, including recent genetic breakthroughs and therapeutic innovations. It will also feature a mini-symposium exploring the controversies surrounding neonatal hypoglycemia. The symposium is intended to enhance the management skills and practice of endocrinologists, metabolism specialists, neonatologists, surgeons, pathologists, radiologists, geneticists and nurses as well as basic scientists interested in islet cell biology. The symposium faculty, leaders in the field of hyperinsulinism and hypoglycemia, will present 25 plenary lectures on all aspects of these disorders.

GENERAL INFORMATION

The conference will be held in the Ruth and Tristram Colket, Jr. Translational Research Building on the Raymond G. Perelman Campus at Children's Hospital of Philadelphia. The registration fee is \$350 for physicians and \$250 for trainees and other healthcare professionals, and includes continental breakfast, breaks, lunch, parking and syllabus material.

SYMPOSIUM OBJECTIVES

- Describe the clinical manifestations, genetics and natural history of congenital hyperinsulinism
- Review recent advances in the medical and surgical management of hyperinsulinism
- Discuss current controversies and management options of neonatal hypoglycemia

ABSTRACT SUBMISSIONS

The program includes sessions at which attendees may present posters and short oral communications of their own clinical or laboratory research. The deadline for abstract submission is **Friday, June 14**. Authors will be notified of abstracts accepted for poster or oral presentations by Friday, July 19. A limited number of travel grants will be available to junior investigators wishing to apply. Junior investigators must apply at the time they register for the symposium and submit their abstract.

SUBMIT AN ABSTRACT TO HYPERINSULIN@EMAIL.CHOP.EDU

ACCME ACCREDITATION STATEMENT

Children's Hospital of Philadelphia is accredited by the Accreditation Council for Continuing Medical Education (ACCME) to provide continuing education for physicians.

AMA CREDIT DESIGNATION STATEMENT

Children's Hospital of Philadelphia designates this live activity for a maximum of 14.0 *AMA PRA Category 1 Credits™*. Physicians should claim only the credit commensurate with the extent of their participation in the activity.

CONTINUING NURSING EDUCATION APPROVED PROVIDER STATEMENT

Children's Hospital of Philadelphia is an approved provider of continuing nursing education by the Pennsylvania State Nurses Association, an accredited approver by the American Nurses Credentialing Center's Commission on Accreditation.

HOTEL INFORMATION

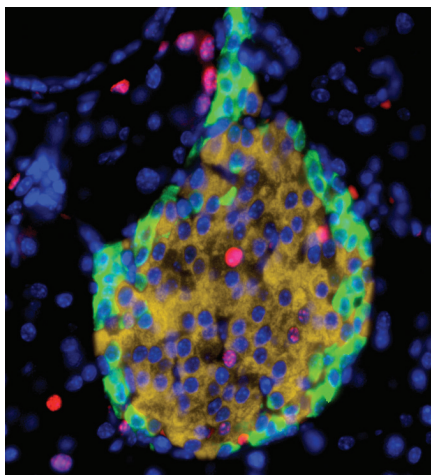
Rooms have been reserved at reduced rates at the Sheraton Philadelphia University City Hotel. The Sheraton has convenient access to Center City Philadelphia, Amtrak's 30th Street Station, I-76 and Philadelphia International Airport. The special rate for a single- or double-occupancy room is \$172 plus a 16.37% room tax. Participants are required to make their own hotel reservations by calling the hotel at 215-387-8000. Please mention the name of the conference when making your reservations. This special room rate will be available until Monday, August 5, 2019. After that date, reservations will be accepted based on space and rate availability.

CANCELLATION AND REFUND POLICY

Children's Hospital of Philadelphia reserves the right to cancel or postpone any course due to any unforeseen circumstances. In the event of cancellation or postponement, Children's Hospital of Philadelphia will refund any registration fees, less a \$40 service charge, but is not responsible for any related costs, charges or expenses to participants, including cancellation charges assessed by airlines or travel agencies. In order to process refunds for course withdrawals, cancellation must be received in writing by Friday, Aug. 23, 2019. No refunds will be issued thereafter.

SERVICES FOR PEOPLE WITH DISABILITIES

If special arrangements are required for an individual with a disability to attend this meeting, please contact the Continuing Medical Education Department at 215-590-5263.



Pancreatic islet

Session 1: Congenital Hyperinsulinism

- 8 a.m. Welcome and Introductions
Diva D. De León-Crutchlow, MD, MSCE
- 8:10 a.m. Challenges, Opportunities and Unmet Need: Analysis of Current State and Future
Diva D. De León-Crutchlow, MD, MSCE
- 8:30 a.m. Diazoxide Responsive Forms of Congenital Hyperinsulinism
Charles A. Stanley, MD
- 9 a.m. Diazoxide Unresponsive Forms of Congenital Hyperinsulinism
Henrik Christesen, MD, PhD
- 9:30 a.m. Syndromic Forms of Hyperinsulinism
Jennifer M. Kalish, MD, PhD
- 10 a.m. Short Communications – Session 1

Session 2: Diagnosis

- 10:50 a.m. Approach to the Diagnosis of Hyperinsulinism
Katherine Lord, MD
- 11:10 a.m. Molecular Diagnosis of Congenital Hyperinsulinism
Arupa Ganguly, PhD
- 11:30 a.m. Histological Diagnosis of Hyperinsulinism
Tricia R. Bhatti, MD

11:50 a.m. Luncheon

12:30 p.m. Poster Session 1

1 p.m. Short Communications – Session 2

Session 3: Principles of Management

- 1:50 p.m. Approach to the Management of Congenital Hyperinsulinism
Diva D. De León-Crutchlow, MD, MSCE
- 2:10 p.m. Medical Management of Hyperinsulinism
Paul S. Thornton, MD
- 2:30 p.m. 18F DOPA PET Imaging of Focal Hyperinsulinism
Lisa J. States, MD
- 2:50 p.m. Break and Exhibits
- 3:10 p.m. Surgery for Hyperinsulinism
N. Scott Adzick, MD, MMM
- 3:30 p.m. Team Approach to Hyperinsulinism
K. Lord, J. Kalish, N.S. Adzick, L. States, T. Bhatti, D. De León-Crutchlow
- 4:30 p.m. Investigational Therapies
Klaus Mohnike, MD
- 5 p.m. Adjourn
- 6 p.m. Symposium Dinner

Session 4: Long-Term Care of Patients with Hyperinsulinism

8 a.m. Management of the Child with Persistent Hypoglycemia After Pancreatectomy
Amanda M. Ackermann, MD, PhD

8:25 a.m. Post-pancreatectomy Diabetes
Thomas Meissner, MD

8:50 a.m. Exocrine Insufficiency Following Pancreatectomy
Asim Maqbool, MD

9:10 a.m. Feeding Issues in Congenital Hyperinsulinism
Sherri S. Cohen, MD, MPH

9:30 a.m. Neurodevelopmental Outcomes
Katherine Lord, MD

10 a.m. Break and Exhibits

Session 5: Breakout Sessions

- 10:20 a.m. Q&A with the Experts
- Medical Management – Medications and Side Effects
 - Care of Children after Pancreatectomy
 - Nutritional Issues in Congenital Hyperinsulinism
 - Interpretation of Genetic Testing Results
 - Nursing Role in the Management of the Child with Hyperinsulinism

11:20 p.m. Luncheon

Noon Poster Session 2

12:30 p.m. Short Communications – Session 3

Session 6: The β -cell in Hyperinsulinism

1:30 p.m. The Islet Phenotype in Hyperinsulinism
Mark Dunne, BSc, PhD

1:50 p.m. Channelopathies
Colin G. Nichols, PhD

2:10 p.m. KATP Channel Regulation
Show-Ling Shyng, PhD

2:30 p.m. Break and Exhibits

MINI-SYMPOSIUM

Neonatal Hypoglycemia: Can We Settle the Controversies?

3 p.m. Transitional Hypoglycemia
Charles A. Stanley, MD

3:30 p.m. Fetal and Neonatal Regulation of Insulin Secretion
Diana E. Stancescu, MD

4 p.m. Pediatric Endocrine Society Guidelines
Paul S. Thornton, MD

4:30 p.m. Outcomes of Neonatal Hypoglycemia
Jeffrey R. Kaiser, MD, MA

5 p.m. Adjourn

Unless otherwise noted, faculty is from Children's Hospital of Philadelphia and/or the Perelman School of Medicine at the University of Pennsylvania.

SYMPOSIUM COURSE DIRECTORS

Diva D. De León-Crutchlow, MD, MSCE
*Chief, Division of Endocrinology and Diabetes
Director, Congenital Hyperinsulinism Center
Associate Professor of Pediatrics*

Katherine Lord, MD
*Director, Inpatient Endocrinology
Assistant Professor of Pediatrics*

FACULTY

Amanda M. Ackermann, MD, PhD
*Assistant Professor of Pediatrics
Division of Endocrinology and Diabetes*

N. Scott Adzick, MD, MMM, FAAP, FACS
*Surgeon-in-Chief
Chief, General, Thoracic and Fetal Surgery
Director, Center for Fetal Diagnosis and Treatment
C. Everett Koop Professor of Pediatric Surgery*

Tricia R. Bhatti, MD
*Assistant Professor of Clinical Pathology and
Laboratory Medicine*

Sherri Shubin Cohen, MD, MPH, FAAP
*Medical Director, Pediatric Feeding and
Swallowing Center
Program Director, Nutrition Fellowship
Associate Professor of Clinical Pediatrics*

Arupa Ganguly, PhD
*Professor of Genetics
Department of Genetics*

Jennifer M. Kalish, MD, PhD
*Attending Physician, Human Genetics
Director, Beckwith-Wiedemann Syndrome
Program of Excellence
Assistant Professor of Pediatrics*

Anne Marie Monachino, MSN, RN, CPN, CHSE-A
*Nursing Professional Development Specialist
Senior Simulation Educator, Center for Simulation,
Advanced Education & Innovation*

Asim Maqbool, MD
*Medical Director of Pancreatology
Associate Professor of Clinical Pediatrics*

Diana E. Stanescu, MD
*Assistant Professor of Pediatrics
Division of Endocrinology and Diabetes*

Charles A. Stanley, MD
*Founder, Congenital Hyperinsulinism Center
Emeritus Professor of Pediatrics*

Lisa J. States, MD
*Director of Outpatient Satellite Imaging
Department of Radiology
Associate Professor of Radiology*

Photo courtesy of the Philadelphia Convention and Visitors Bureau.



GUEST FACULTY

Henrik Christesen, MD, PhD

*Professor, The International Hyperinsulinism Centre
Hans Christian Andersen Children's Hospital
Odense University Hospital
Odense, Denmark*

Mark Dunne, BSc, PhD

*Division of Diabetes, Endocrinology and Gastroenterology
Professor of Physiological Sciences
School of Medical Sciences
The University of Manchester
Manchester, England*

Jeffrey R. Kaiser, MD, MA, FAAP

*Chief, Division of Neonatal-Perinatal Medicine
Kenneth V. and Eleanor M. Hatt Professor of Neonatal Medicine
Professor of Pediatrics and Obstetrics and Gynecology
Penn State Health Children's Hospital
Hershey, Pa.*

Prof. Dr. Med. Thomas Meissner

*University Children's Hospital Düsseldorf
Düsseldorf University Hospital
Düsseldorf, Germany*

Prof. Dr. Med. Klaus Mohnike

*Senior Consultant of Pediatrics at Otto-von-Guericke Universität
Chair of Central-German Competence Network for Rare Diseases
Universitätskinderklinik
Magdeburg, Germany*

Colin G. Nichols, PhD

*Director, Center for the Investigation of Membrane Excitability Diseases
Department of Cell Biology and Physiology
Carl Cori Professor of Pediatrics
Washington University School of Medicine
St. Louis, Mo.*

Show-Ling Shyng, PhD

*Department of Biochemistry and Molecular Biology
Professor of Pediatrics
Oregon Health & Science University
Portland, Ore.*

Paul S. Thornton, MD

*Medical Director of Diabetes and Endocrinology
Director of the Congenital Hyperinsulinism Center
Cook Children's Medical Center
Fort Worth, Texas*